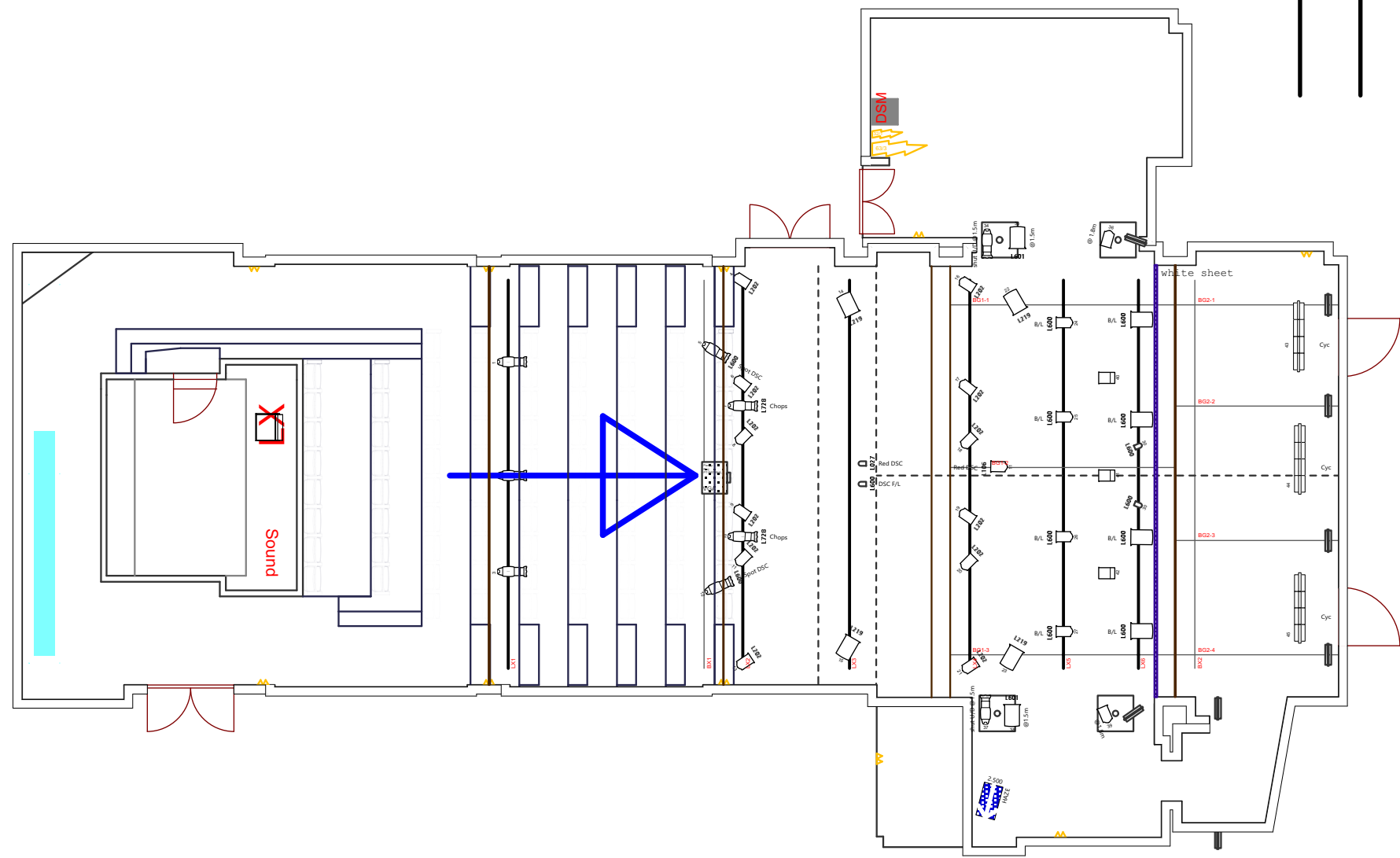


| REVISION HISTORY | | | |
|------------------|-------------|------|----------|
| REV | DESCRIPTION | DATE | APPROVED |
| | | | |



Students' Union
UNIVERSITY OF NOTTINGHAM

The Nottingham
New Theatre

| | | | |
|------------------|---------------|---|--------------------------------|
| Production Title | | WEST by Steven Berkoff Nottingham New Theatre | |
| Drawing Title | | Whole Venue Plan LX Plans A3 | |
| Designer | Will Pimblett | Director | Omid Faramarzi & Rachel Angeli |
| Drawn By | WJDP | Scale | 1:100 |
| Venue | New Theatre | Drawing No. | 1 of 3 |
| Date | 2015-11-14 | | |
| CAD File Name | West LX.vwx | | |