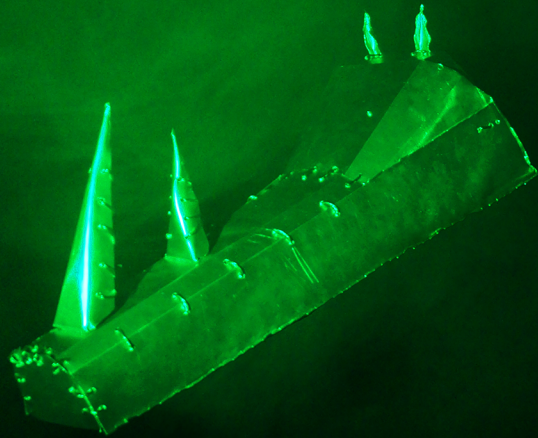


# RHINOCEROS

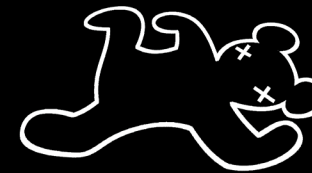
BY EUGÈNE IONESCO

TRANSLATED BY DEREK PROUSE



# *The* TOYLAND MURDERS

a puppet show



RHINOCEROS IS PRESENTED BY SPECIAL ARRANGEMENT WITH SAMUEL FRENCH, LTD

10th-13th June 2015

Doors 7pm/Start 7:30pm [Sat Mat Start 2:30pm]

Tickets from £4

Reserve tickets at [newtheatre.org.uk](http://newtheatre.org.uk)

Students' Union  
UNIVERSITY OF NOTTINGHAM



# Performers

Amy Brough-Aikin  
James Roscow  
Charlotte Kirkman  
Emilie Brittain  
Anna Scholes  
Sasha Gibson  
Gus Herbert

## Crew

Director – Ben Hollands  
Producer – Emily Brady  
Executive Producer – Joe Strickland  
Technical Director – Nathan Penney  
Lighting Designer/ Operator – Harry Bridge  
Set Construction – Joe Heil  
Stage Managers – Jessica Lundholm and Kathy Shepherd  
Poster Design/Sound Design – Ben Hollands  
Puppet Makers – Rachel Angeli, Niamh Caines, Emma Fearon, Darcey Graham, Emma Kendall, Max Miller, Beth Mullen, Lydia Smith and Beth Wilson.  
Special Thanks – James Bentley, Sam Greenwood, Alex Huntley, Diderik Ypma, Niamh Caines, Ollie Shortt  
Chris Trueman, Daniel O'Connor, Maddie Hardy, Eden Phillips  
Harrington, Page Phillips Harrington, Joe Heil, Max Miller

Emily Brady – Producer  
BA American and  
Canadian Studies (4th Year)

Previous Experience:  
Acting: Abigail's Party, The Bear,  
The Woman Who Cooked Her  
Husband, Frankenstein, 40%,  
Emily and Ben in 'A Likely Story,'  
The Glass Menagerie (Nottingham New  
Theatre) A Midsummer Night's Dream  
(Lakeside), Proof, Smitten (TCN)



## Producer's Note:

When Ben asked me if I would be interested in producing his film-noir puppet show, I was riding a Greyhound Bus across America and hadn't slept in thirty hours. So I dazedly agreed, and then panicked the next morning when I realised I had no idea how to produce anything. Thankfully, it feels like the entirety of the Nottingham New Theatre has rallied around this project. This show has been a true collaboration of so many incredibly talented people; from puppet gurus, to toybox crafters, to Kickstarter advisors. Special thanks have to go to our incredibly generous Kickstarter backers, whose unwavering support and interest in our project made all of this possible! Our crew have also been wonderful to work with. Harry, Nathan and Joe have gone above and beyond to make this very tech-heavy show an absolute dream. Jess and Kathy have been brilliant as stage managers, and we couldn't have asked for better people to help our show every night! And, of course, the puppet makers. Month after month you guys have all tirelessly worked to make this show a reality, and to bring our characters to life. This would not have been possible without you, so thank you so much!

The Toyland Murders is a show that is meant to delight an audience. It is funny, ridiculous, over-the-top and, above all, heartfelt. Ben and I love this show, and our phenomenal cast have surpassed our wildest expectations for them. You guys have been an absolute joy to work with from start to finish, and each and every one of you never fails to brighten my day after every rehearsal.

I have had a wonderful time at the Nottingham New Theatre during my time at university, and I will be deeply sad to leave. It has truly made my university experience absolutely magical. Above all, there is no better way to finish my time at the New Theatre than working on a show that means the world to me. My final words in this note have to go to Ben, who has created such a beautiful world with this show, that I am so happy I get to be a part of.

Gus Herbert  
BA History (3rd Year)

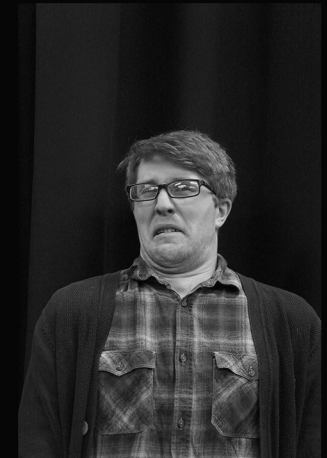


Previous Experience:  
Directing: Old Times, Orphans,  
King Lear, Blackbird, Buried Child  
(Nottingham New Theatre)

Everyone named below made a donation to The Toyland Murders' Kickstarter page. Without the support and generosity of every person listed below, this show would not be possible. From the cast and crew, thank you so much for entrusting us to make this show the best it could be!

Teresa Anderson. Laura Jayne Bateman. David Beddard  
Will Berrington, Beth, Chloe Bickford. Dan Brady  
Matt Brady. Amanda Champion, Susan Champion  
Sarah Clark, Rebecca Clee, James Doctorlawyerstein Charles  
Dave, Sam Dodgjin, Emma Fearon, James Fraser, Elise M. Gross  
Madeleine Hardy, Neil and Sabine Herbert, Joseph Heil  
Tom Hicks, Simon Hollands, Christina Kirkman. Jake Leonard  
Zoey Lewis, Jessica Lundholm, Laura Macdonald  
Josh Mallalieu, Ben Maries, William Morley  
Tom Proffitt, Abby Isabella Robinson, Emma Roscow  
Andrew Routledge, Emily S, Neddy Seagoon, Lydia Smith  
Matt Standen, Toby Stevens, Joe Strickland, Toni Thornton,  
Unannice, Robin Walsh

Ben Hollands – Director  
MA English (4th Year)



Previous Experience:  
Acting: Not About Heroes, Emily and Ben in, 'A Likely  
Story,' King Lear, 18B, The Final Act,  
Equus, The Rehearsal, Habeas Corpus,  
Sorry, Wrong Number, The Comedy  
of Errors, East, 1984, The 39 Steps  
(Nottingham New Theatre)  
Directing/Writing: Fresher's Fringe 2014,  
Society Rules

### Director's Note:

It feels like light-hearted comedy gets a bad rap these days. It's often dismissed as childish frivolous or – and this is the one that gets me – easier than its angsty older brother, serious thought-provoking theatre. But why is that? It's wonderful that theatre has the power to make us sad and question the very fibre of our being, but it's equally wonderful that it has the power to make us happy. I hope The Toyland Murders makes you happy.

A show's only as good as the team behind it, and my God did the team knock it out of the park with this one. It's genuinely humbling how many people jumped on board the second we asked for help and it's their care and attention that have made the show what it is. A big thank you goes to our tech guys for their mastery of light and sound, to our stage managers who've excellently managed our props/characters, and of course to our Kickstarter backers for opening their hearts and wallets. A special mention has to go to the puppet-making grotto whose dedication over the last month has been more than we could have ever asked for. Your hard work has brought all of these characters to life. Thank you so much.

The cast has been an absolute delight. Guys, your playfulness and enthusiasm lift Emily's and my spirits from rehearsal to rehearsal and you've well and truly made all these characters your own. Charlotte, Emilie, Anna and Sasha: you perform spectacularly and I can't wait to see what you do next. Amy: it's been a joy to direct you for your last NT outing – you simply shine as McGraw. James and Gus: this is neither your first nor last year so it's difficult to make this quite as meaningful, but you do great and I hope you continue to do great. Is that good?

Emily, you keep thanking me for asking you to produce this show, but honestly who else was it ever going to be? You're all at once my editor, my coach, my conspirator, my spurrier-on and simmerer-down, my ally, my guide and my friend. You could have been awful at producing and I would have wanted you; it's only pure luck that you were excellent at it. Without you The Toyland Murders would be just a dumb idea in my head.

Over the last four years The Nottingham New Theatre has been very good to me, better than it ever needed to be. I joined the theatre a blonde and gangly white boy unsure of himself and afraid of the world and, although I can't say I've changed a whole lot, the theatre community took me in and told me that what I did had worth. If I have a message for returning members it's this: please please please don't lose sight of what makes the New Theatre great. Hold on to what's important and recognise what isn't. Be welcoming and generous. Continue to make the theatre a haven for kind souls and good ideas, and the world will be yours. Thankoo all from the bottom of my heart.



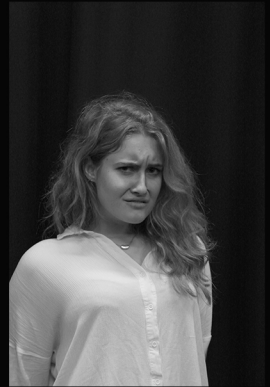
Amy Brough-Aikin  
BA American and  
Canadian Studies (4th Year)

Previous Experience:  
Acting: Bed, Accidental Loss of  
a Baby, Memory of Water, Stags  
and Hens, The Infant  
(Nottingham New Theatre)



Emilie Brittain  
BA Music (1st Year)

Previous Experience:  
Acting: Fresher's Fringe, King Lear  
Singing: Bent, Doubt (Nottingham  
New Theatre)



James Roscow  
BA History (2nd Year)

Previous Experience:  
Acting: The Last Days of Judas Iscariot,  
Tribes, King Lear (Nottingham  
New Theatre), A Midsummer Night's  
Dream (Lakeside)



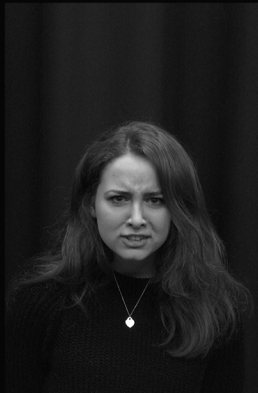
Anna Scholes  
BSc Geography (1st Year)

Previous Experience:  
Acting: Road (Nottingham New Theatre),  
Blue Remembered Hills  
(Garrick Theatre), Woman In Mind  
(Poynton High School)  
Assistant Producing: Not About Heroes  
(Nottingham New Theatre)



Charlotte Kirkman  
BA International Media  
and Communications (1st Year)

Previous Experience:  
Acting: Fresher's Fringe 2014, 40%,  
King Lear (Nottingham New Theatre)



Sasha Gibson  
BA Film and  
Television Studies (1st Year)

Previous Experience:  
Acting: Fresher's Fringe 2014,  
Women of Troy  
Singing: Doubt, Bent  
(Nottingham New Theatre)

